



1300 Main St.
Houston, TX 77002
Phone: (713) 989-7000
Website: www.energytransfer.com

Energy Transfer Partners, a Texas-based energy company founded in 1996 as a small intrastate natural gas pipeline company, is now one of the largest and most diversified master limited partnerships in the United States.

Strategically positioned in all of the major U.S. production basins, the company owns and operates a geographically diverse portfolio of energy assets, including midstream, intrastate and interstate transportation and storage assets. Energy Transfer operates more than 125,000 miles of natural gas, crude oil, natural gas liquids and refined products pipelines and related facilities, including terminalling, storage, fractionation, blending and various acquisition and marketing assets in 44 states.

For more information about local operations of **Energy Transfer**, please contact us:

Sabine parish:

Bob Middleton
Operations Manager
318-656-6145 (w), 318-560-7428 (m)
bob.middleton@energytransfer.com

Iberville, Pointe Coupee and St. Martin parishes:

Randy Zeringue
Operations Manager
225-906-9286 (w), 225-978-5882 (m)
randy.zeringue@energytransfer.com

Claiborne, Lincoln, Morehouse, Ouachita and Union parishes:

Bruce Kelpé
Operations Manager
318-245-2376 (m)
bruce.kelpe@energytransfer.com

Bienville, Bossier, Caddo, De Soto, Red River and Webster parishes:

Billy Duggan
Operations Manager
318-656-6139 (w), 318-422-9821 (m)
billy.duggan@energytransfer.com

Calcasieu and Cameron parishes:

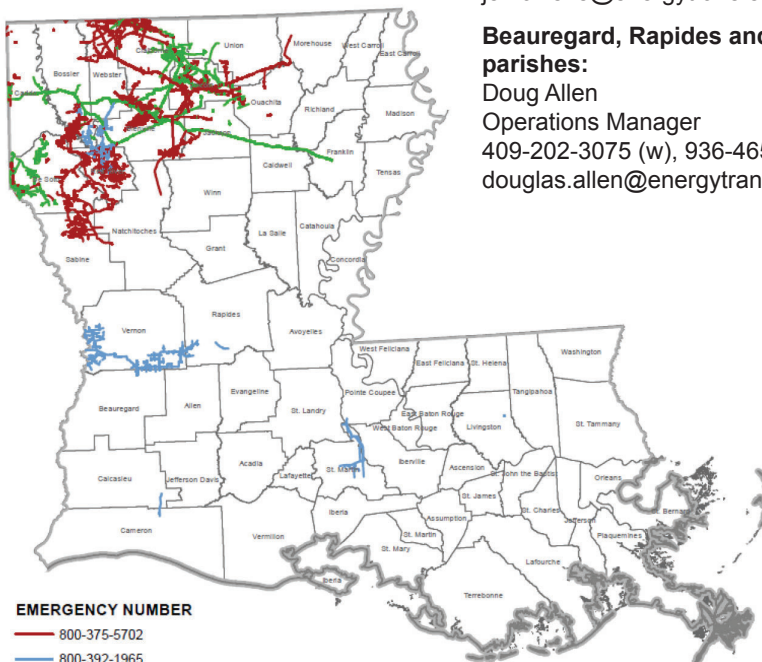
Jewel Ellison
Operations Manager
409-827-2105 (w), 713-591-8318 (m)
clarence.ellison@energytransfer.com

Caldwell, Franklin, Jackson, Natchitoches and Richland parishes:

Jeff Owens
Operations Manager
318-562-2034 (w), 318-382-3100
jeff.owens@energytransfer.com

Beauregard, Rapides and Vernon parishes:

Doug Allen
Operations Manager
409-202-3075 (w), 936-465-8061 (m)
douglas.allen@energytransfer.com



EMERGENCY NUMBER
 — 800-375-5702
 — 800-392-1965
 — 877-404-2730

EMERGENCY CONTACT:
1-877-404-2730, 1-800-392-1965
or 1-800-375-5702

PRODUCTS/ DOT GUIDEBOOK ID#/ GUIDE#:
 Natural Gas 1971 115

LOUISIANA PARISHES OF OPERATION:

Beauregard	Morehouse
Bienville	Natchitoches
Bossier	Ouachita
Caddo	Pointe Coupee
Calcasieu	Rapides
Caldwell	Red River
Cameron	Richland
Claiborne	Sabine
De Soto	St. Martin
Franklin	Union
Iberville	Vernon
Jackson	Webster
Lincoln	

Changes may occur. Contact the operator to discuss their pipeline systems and areas of operation.

